

THE ADVENTURES OF BOOSTER BOY

SAVING THE GALAXY
ONE PLANET AT A TIME



ISSUE 2

BB RS/2025





EPISODE 1

FAR FROM HOME

BOOSTER BOY AND HIS DOG ZIG-ZAG ARE TRAVELLING THROUGH THE GALAXY IN THEIR ROCKET SHIP LOOKING FOR A NEW ADVENTURE.

1

ON HIS HOME PLANET, BOOSTER BOY WASN'T VERY BIG COMPARED TO ALL OF THE OTHER PEOPLE. NOR DID HE HAVE THEIR SUPER POWERS. BUT HE WAS JUST AS BRAVE, AND HE WANTED TO HELP ALL OF THE CHILDREN IN THE GALAXY.

2

THEY TRAVELLED TO AN ICEY MOON WHERE THE ALIENS WERE OVER TEN FEET TALL AND MADE OF JELLY.

3

THEY VISITED A GRASSY PLANET WHERE THE ALIENS WERE ONLY THE SIZE OF ANTS.

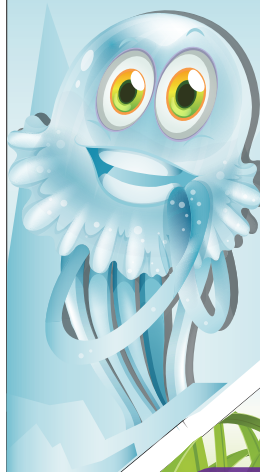
4

6

BOOSTER BOY LANDED HIS ROCKET SHIP IN A WIDE OPEN FIELD, AND TURNED IT INVISIBLE TO HIDE IT FROM THE HUMANS.

5

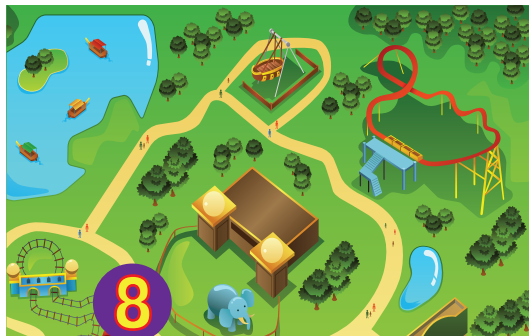
THEY CONTINUED TRAVELLING THE GALAXY UNTIL THEY FOUND A SMALL BLUE GREEN PLANET WHERE THE PEOPLE CALLED THEMSELVES HUMAN.





BOOSTER BOY AND ZIG-ZAG LEFT THEIR ROCKET SHIP TO EXPLORE THIS PLANET THE HUMANS CALLED EARTH.

7



8

THEY WENT TO A THEME PARK AND RODE ON ALL OF THE RIDES, TWICE. THEY DIDN'T HAVE ANYTHING LIKE THEME PARKS WHERE BOOSTER BOY WAS FROM.

YOU MUST BE THIS TALL TO RIDE

9

THEY SAW THAT THE CHILDREN OF EARTH HAD TO BE TALL ENOUGH TO SAFELY GO ON SOME OF THE RIDES.

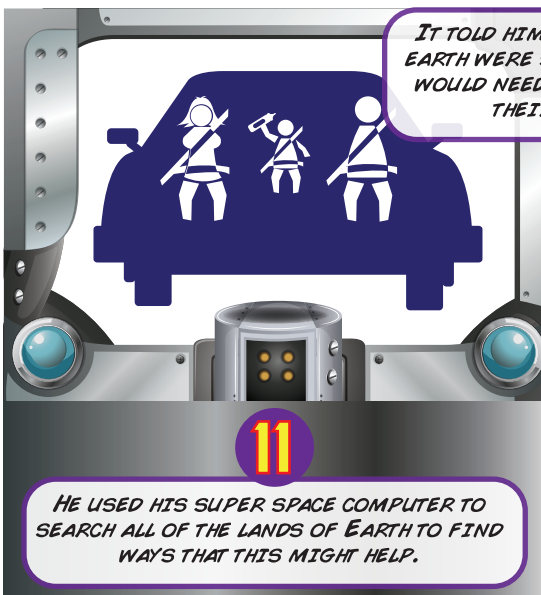


BOOSTER BOY MEASURED HIMSELF AND DISCOVERED THAT HE WAS EXACTLY 135CM TALL. IT MADE HIM WONDER IF THIS COULD HELP THE PEOPLE OF EARTH.

IT TOLD HIM THAT IF THE CHILDREN OF EARTH WERE SHORTER THAN 135CM, THEY WOULD NEED TO SIT IN A CAR SEAT IN THEIR EARTH VEHICLES.

11

HE USED HIS SUPER SPACE COMPUTER TO SEARCH ALL OF THE LANDS OF EARTH TO FIND WAYS THAT THIS MIGHT HELP.



12

BOOSTER BOY THEN KNEW THAT HE HAD A NEW PURPOSE ON EARTH, SAVING LIVES.



STAY SAFE

Don't use second hand car seats in case they have been damaged.
The safest place for your car seat is in the back of the car
Not all seats fit all cars, it is important to make sure your seat is safe.
Don't be in a hurry to get rid of your seat, you are safer in seat until 150cm tall



WEIRD WORMHOLES

Zig-Zag is stuck in a wormhole, can you work your way to the centre to help him escape?

ROCKET ROUTES

Select the spaceship that will take you safely home to Boostropolis.
Avoid the rockets that are heading to the exploding stars!



PROFILE: BOOSTER BOY

JOB: SUPER HERO

FAVOURITE FOOD: BANANAS

HEIGHT: 135CM

& BOOSTER FRUIT

HOBBIES: VISITING NEW PLANETS, HELPING
PEOPLE AND PLAYING BOOSTER BALL!



Booster Fruit taste
a bit like mango



BOOSTER-BALL IS PLAYED IN
ANTI-GRAVITY BOOTS ON A FIELD A
LITTLE LARGER THAN A FOOTBALL PITCH.
PLAYERS SCORE POINTS BY STRIKING
ONE OF 5 GOAL POSTS WITH THE GAME
BALL.

Gadget Check

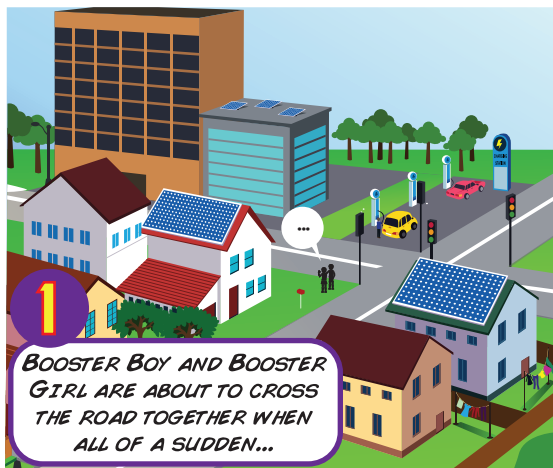
THE BOOSTER BELT IS VERY
IMPORTANT, KEEPING
BOOSTER BOY SAFE IN HIS
SPACESHIP. THE SHIP ITSELF
IS VITAL FOR INTER-GALACTIC
TRAVEL

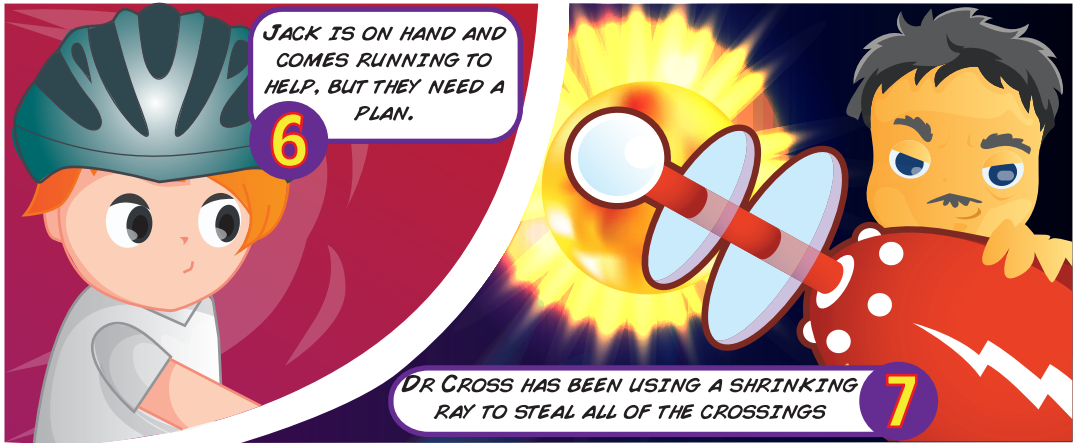




EPISODE 4

CROSSING OUT!



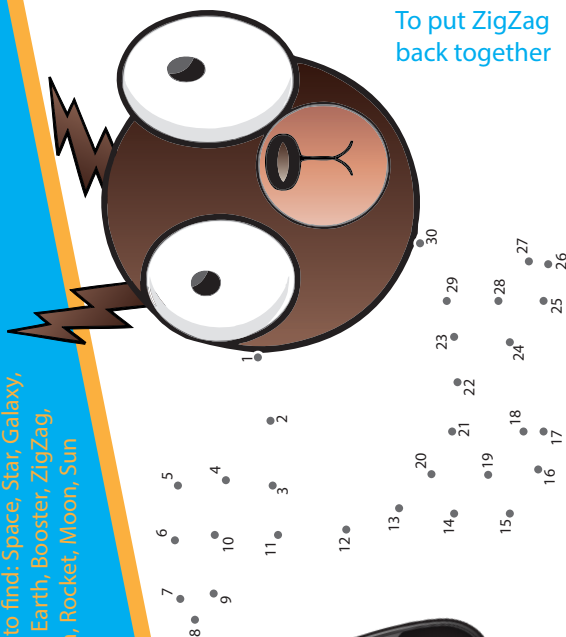


S	P	A	C	E	B	F	R	H
H	N	L	N	A	C	U	P	A
O	X	O	B	R	O	U	L	K
E	O	J	O	T	G	C	A	N
M	Z	U	O	H	K	L	N	D
R	I	P	S	G	U	R	E	Y
O	G	H	T	B	L	L	T	R
C	Z	Z	E	O	D	H	A	C
K	A	N	R	N	F	T	R	A
E	G	K	B	U	S	T	E	R
T	W	D	O	G	U	N	J	A
B	T	O	Y	U	N	V	T	Y
C	V	G	A	L	A	X	Y	F

Words to find: Space, Star, Galaxy,
Planet, Earth, Booster, ZigZag,
Nebula, Rocket, Moon, Sun

JOIN THE DOTS

To put ZigZag
back together



WORDSEARCH



MATCHING ROCKETS

Can you find two identical rockets?



GET START

The seat selector app is available for both android and i-OS devices. It will help you to navigate through selecting an appropriate seat, with professional advice on how to get a good fit.

PROFILE: DR CROSS

JOB: EVIL GENIUS

HEIGHT: 127CM

FAVOURITE FOOD: BOILED SPROUTS

HOBBIES: PLOTTING TO TAKE OVER THE WORLD, MAKING ROADS MORE DANGEROUS AND... KNITTING!



Gadget Check

THE SHRINKING RAY GUN HAS BEEN DESIGNED TO CREATE CHAOS ON THE ROADS BY MAKING SAFE CROSSING PLACES DISAPPEAR

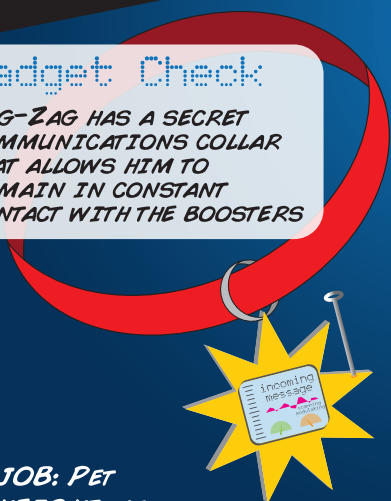


SECRET WEAPON
SHRINKING RAY GUN



Gadget Check

ZIG-ZAG HAS A SECRET COMMUNICATIONS COLLAR THAT ALLOWS HIM TO REMAIN IN CONSTANT CONTACT WITH THE BOOSTERS



JOB: PET

HEIGHT: 46CM

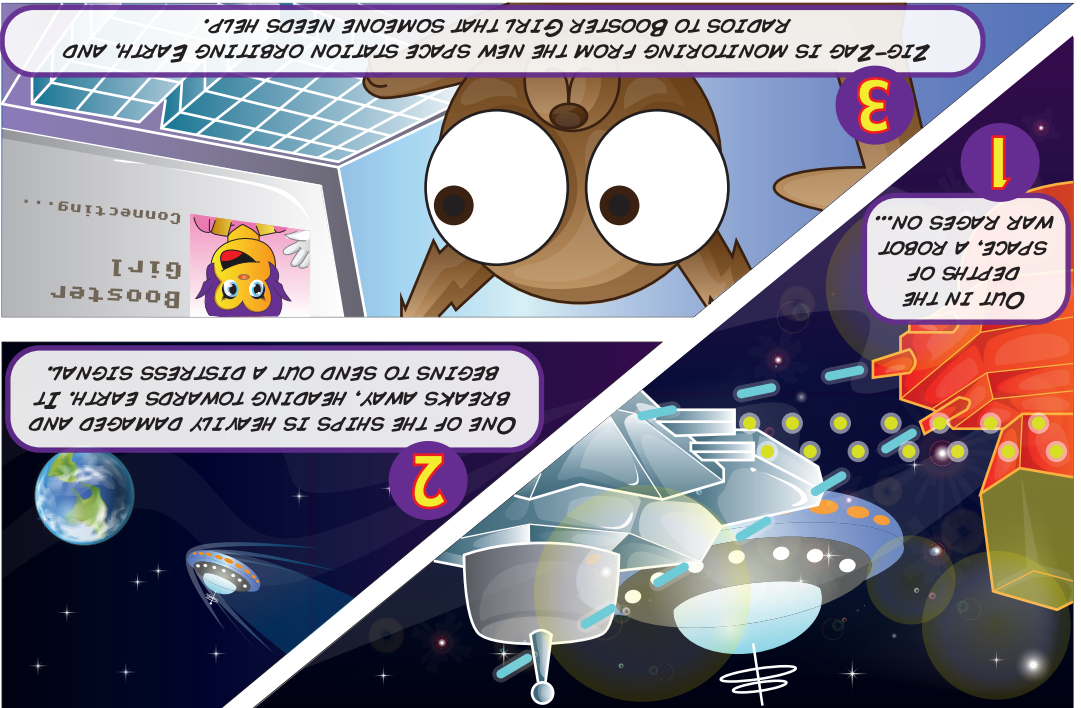
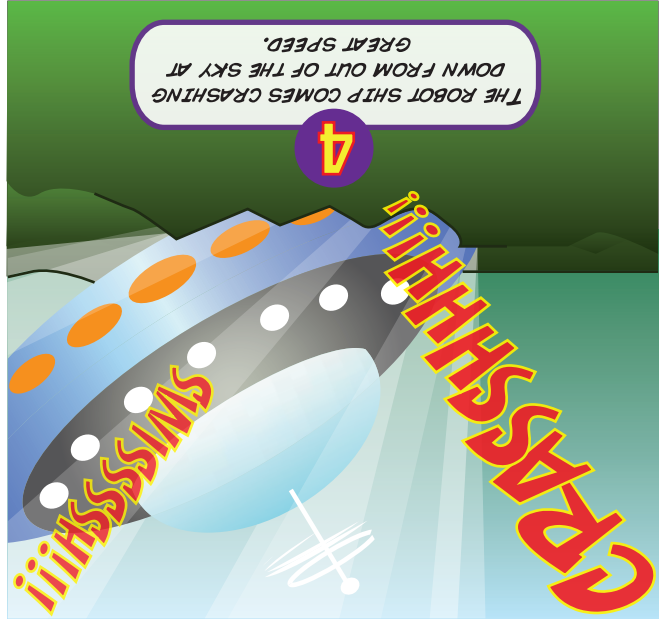
FAVOURITE FOOD: BLUEBERRY MUFFINS

HOBBIES: INTER-PLANETARY SAFETY AND CHASING STICKS



PROFILE: ZIG-ZAG





PROFILE: BOOSTER GIRL

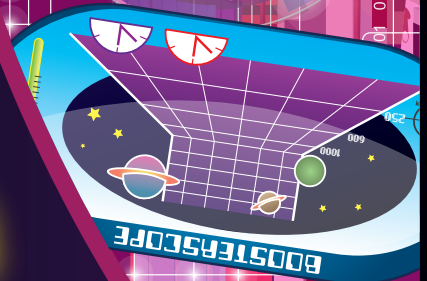
JOB: SUPER HERO
FAVOURITE FOOD: PIZZA
HEIGHT: 135CM
\$ BIBBLE-GLOBS
HOBBIES: VISITING NEW PLANETS, HELPING
PEOPLE AND PLAYING BOOSTER BALL

BOOSTROPOLIS

HOME FOR BOOSTER GIRL IS IN THE GIANTIC, PLANET
WIDE CITY OF BOOSTROPOLIS. BOOSTERS NORMALLY
GROW TO AROUND 250CM TALL WHICH MEANS THAT
BOOSTER BOY AND GIRL ARE VERY SHORT AT JUST 135CM.
BOOSTROPOLIS IS A VERY ADVANCED CITY WHERE THE
TRANSPORT SYSTEM IS ENTIRELY OPERATED BY ROBOTS.

Bibble-Globs are a type
of sweet enjoyed by all
children in Boostropolis

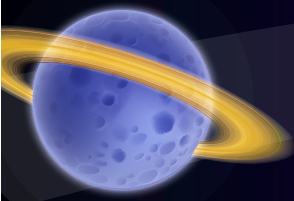
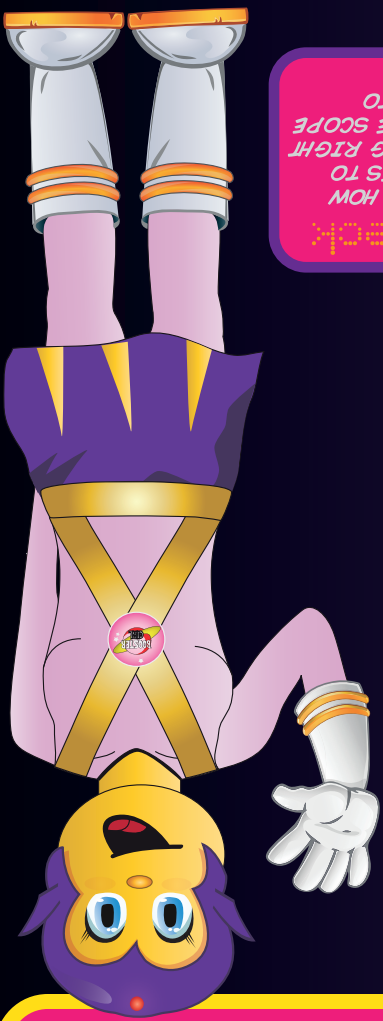
Gadget Check
THE BOOSTER SCOPE IS HOW
BOOSTER GIRL MANAGES TO
SEE WHAT IS HAPPENING RIGHT
ACROSS THE GALAXY. THE SCOPE
CAN EVEN ZOOM DOWN TO
STREET LEVEL.



01 011 010110 101 01011101 010

01 010 001 010

01 11



HOW TALL ARE YOU?

If you are less than 135cm tall then you still need a car seat.
For more information visit:
www.saferroads.org/boosterboy/



--	--	--	--	--	--	--



--	--	--	--	--	--	--



--	--	--	--	--	--



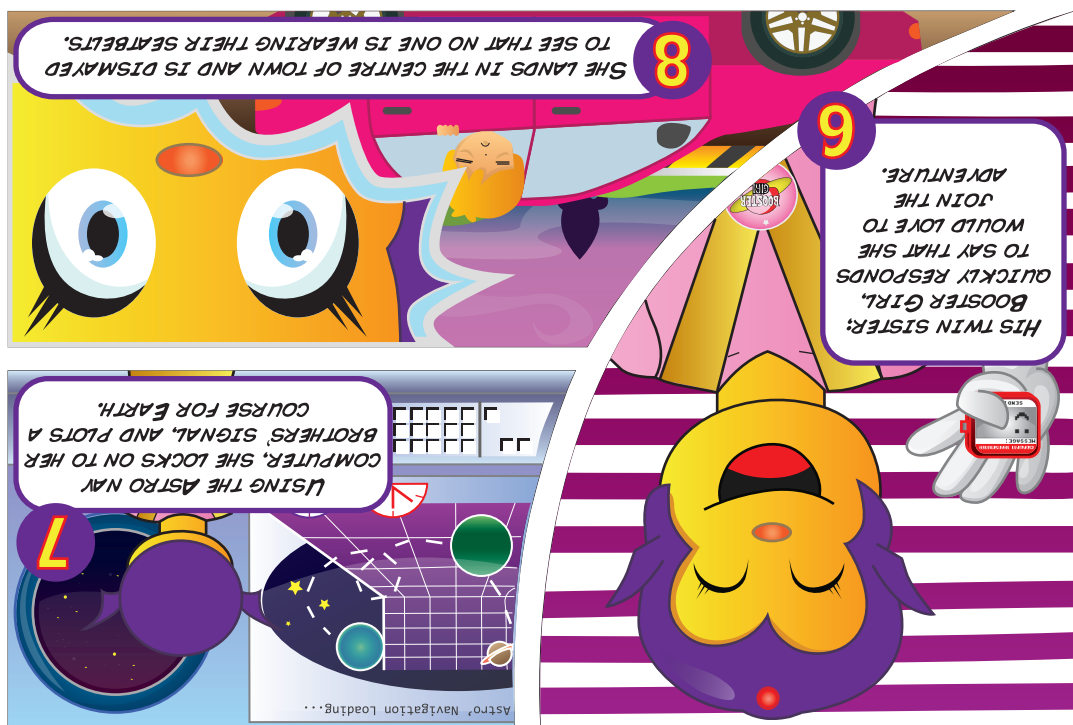
--	--	--	--

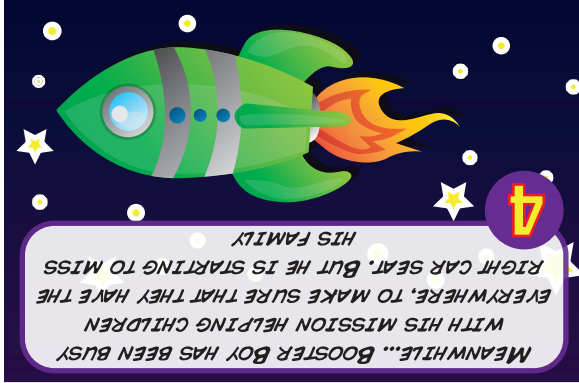
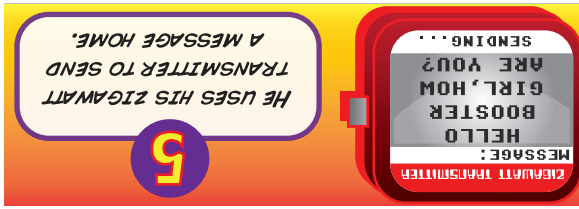


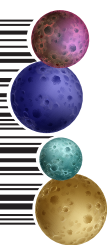
--	--	--	--	--	--	--



SECRET
Use the secret code to work out
the message below







Issue 3
B6 RS/2025



BOOSTER GIRL

THE ADVENTURES OF

SAVING THE GALAXY
ONE PLANET AT A TIME